

# Work Efficiency Analysis using Real Time Analysis

Seema Jadhav<sup>1</sup>, Prashansa Navgiri<sup>2</sup>, Tanuja Davkhar<sup>3</sup>, Bhagyashri Magar<sup>4</sup>, Prof. Sanket Chordiya<sup>5</sup>,

1,2,3,4 Students of department of Computer Engineering, Shatabdi Institute of Engineering & Research, Nashik  
& 5 Head of department of Computer Engineering, Shatabdi Institute of Engineering & Research, Nashik

**Abstract— In this universe of developing advancements everybody is utilizing Android. With huge number of work opening the human labour force has increased. Thus there is a need of a framework which can deal with the information of such countless Employees in an association. This undertaking disentangles the assignment of keep up record in view of its easy to use nature. The Aim of "Work Flow " is planning a booking framework for a work community. Workers are the foundation of any organization. The executives of worker execution assume a significant part in choosing the accomplishment of the association. The application is really a set-up of uses created utilizing Android. It is easy to comprehend and can be utilized by any individual who isn't even acquainted with straightforward representative's framework. It is quick and can perform numerous activities of an organization or association. The product is very easy to understand. The task contains modules like Employee and Admin. This form of the product has multi-client approach. For additional upgrade or advancement of the bundle, client's input will be thought of.**

**Keywords:** employee management system, human resources, leave management, task

## INTRODUCTION

Particularly in distant regions the representative Work Flow system execution are often testing task. In spite of the actual fact that it can't deny the benefits. Utilizing the representative Work Flow system provides a simple method to oversee employee work and better execution as a group.

Because of streamlines and sorts out group the board for HR experts, entrepreneurs and different directors it can consider as a helpful device to a worker the executive's framework. From finance and on boarding to day without work following and execution is that the scope of this system, however it generally should cover the fundamental HR highlight. The worker the executive's system is plan for setting aside cash, time and force and performance admirably for the group moreover. Especially certain telecommuters for handling the group it utilizes the customary announcing through email. In spite of the very fact that this strategy is chaotic and lumbering. it's a tedious administrator errand to reinforce the presentation of the group, so it can zero in on accomplishing the target. The Work flow system uses to efficiently manage the work of his employees. the most purpose of becomes a Work flow system was to own a well-maintained working strategy of his employees. The Work flow system also maintains a daily report of employees work. The Work flow system is intended in order that the manager is assigned a selected project and task to responsible employees.

## PROJECT CONCEPT

The objective of "Work Flow System" is designing a scheduling system for a work centre. Scheduling is such a tool with which the method of intimating activities and notifications are going to be easy and even online within the organization where it is installed. But these task of scheduling the various activities if manually done whether or not they may be personal or official is time consuming and also may result in confusion if not properly scheduled.

Work Flow System may be a distributed application, developed to keep up the main points of employees working in any organization. It maintains the knowledge about the private details of their employees. The appliance is truly a collection of applications developed using Android. It is simple to understand and might be utilized by anyone who isn't even acquainted with simple employee's system. It is user friendly and just asks the user to follow step by step operations by giving him few options. It is fast and might perform many operations of an organization or organization. The project contains modules like Employee and Admin.

The proposed system is designed to eliminate all the drawbacks of the existing employee management software. The system shall be responsible for maintaining information about employees, thus their personal profile. The system shall incorporate leave management all the way from application to acceptance/rejection of leave requests as well as all employee projects with close monitoring of the projects from creation to completion and trainings to assist in monitoring active and inactive employees.

The main features to be added include:

- Employee profiles
- Leave management
- Task management Notifications

## PROJECT DESIGN

• This chapter gives a detailed outline of the software development methodology used in this project following up the various existing software development methodology. The strength and weaknesses of the chosen methodology have been outline.

• Further, the functional and non-functional requirements of the system are explaining in detail and the use cases, which are a list of steps, typically defining interactions between a role and system, to achieve a goal.

- It allows for development of high-risk or major functions first
- Each release delivers an operational product
- Customer can respond to each build
- Uses “divide and conquer” breakdown of tasks
- Lowers initial delivery cost
- Initial product delivery is faster
- Customers get important functionality early
- Risk of changing requirements is reduced
- 
- Risk of changing requirements is reduced

## SYSTEM ARCHITECTURE

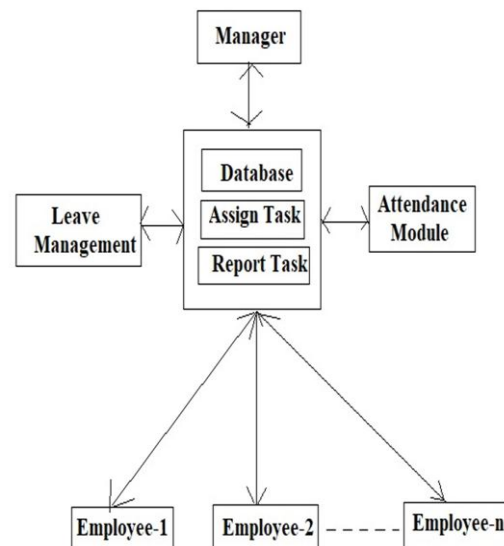


Fig No 1: Basic Architecture of the system

## PARALLEL DEVELOPMENT APPROACH

This model of methodology attempts to address the problem of long delay between analysis phase and the delivery of the system. Instead of doing design and implementation in sequence, it performs a general design for the whole system and then divides the project into a series of distinct subprojects that can be designed and implemented in parallel. Once all subprojects are complete, there is a final

integration of the separate pieces, and the system is delivered.

## DEVELOPMENT TOOLS

### I. Android Studio

Android Studio is the official integrated development environment (IDE) for Google's Android operating system, built on JetBrains' IntelliJ IDEA software and designed specifically for Android development. It is available for download on Windows, macOS and Linux based operating systems. It is a replacement for the Eclipse Android Development Tools (ADT) as the primary IDE for native Android application development.

Android Studio supports all the same programming languages of IntelliJ (and Clion) e.g. Java, C++, and more with extensions, such as Go and Android Studio 3.0 or later supports Kotlin and all Java 7 language features and a subset of Java 8 language features that vary by platform version. External projects backport some Java 9 features. While IntelliJ that Android Studio is built on supports all released Java versions, and Java 12, it's not clear to what level Android Studio supports Java versions up to Java 12 (the documentation mentions partial Java 8 support). At least some new language features up to Java 12 are usable in Android.

### II. MYSQL

MySQL is free and open-source software under the terms of the GNU General Public License, and is also available under a variety of proprietary licenses. MySQL was owned and sponsored by the Swedish company MySQL AB, which was bought by Sun Microsystems (now Oracle Corporation). In 2010, when Oracle acquired Sun, Widenius forked the open-source MySQL project to create MariaDB. MySQL is a component of the LAMP web application software stack (and others), which is an acronym for Linux, Apache, MySQL, Perl/PHP/Python. MySQL is used by many database-driven web applications, including Drupal, Joomla, phpBB, and WordPress. MySQL is also used by many

popular websites, including Facebook, Flickr, MediaWiki, Twitter, and YouTube.

MySQL is offered under two different editions: the open source MySQL Community Server and the proprietary Enterprise Server. MySQL Enterprise Server is differentiated by a series of proprietary extensions which install as server plugins, but otherwise shares the version numbering system and is built from the same code base.

## SYSTEM WORKFLOW

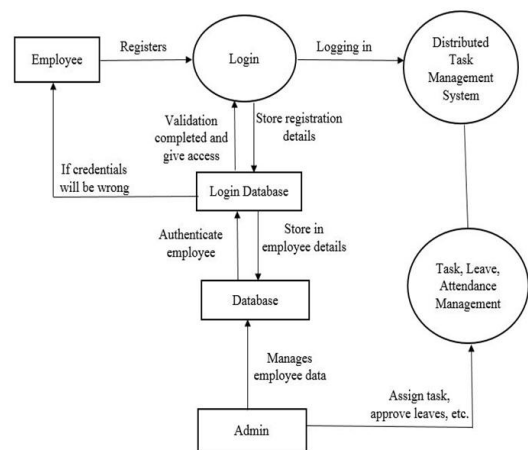


Fig No 2: System Workflow

## DATA FLOW DIAGRAM

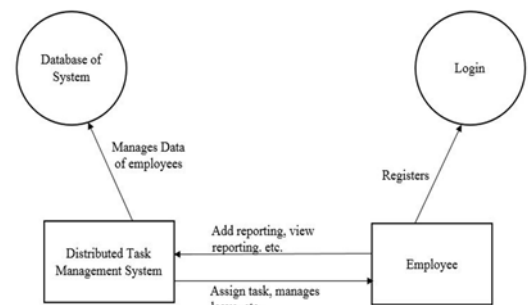


Fig No 3: Data Flow Diagram

## APPLICATIONS

1. Used by companies & Organizations.
2. Can also be used by School/College Staff.

## ADVANTAGES

1. Fast and accurate
2. Starting with going paperless, which saves money and the environment in the process.
3. Going paperless also allows employees to access records in seconds, and ensures privacy by protecting documents with data encryption.
4. Another huge benefit of employee management systems is that it eliminates tasks that waste time, like manual data entry and searching for documents.
5. Leave and attendance paired up can improve accuracy and build discipline in any organization.
6. More disciplinary approach from employees as they are being monitored by the Employee Management System software.

## LIMITATIONS/CONSTRAINTS

1. Requirement of Android smart phone.
2. Requires Internet connection.

## CONCLUSIONS

This application enables the supervisors to refresh the general presentation of the workers in their particular territories. This observing framework is a progressive portable application which utilizes Android OS for checking time participation of employees. There is no need of manual entering of the day by day movement subtleties of every worker onto the information base. It totally cancels the customary method of figuring exhibitions. This will impressively decrease the administrative work and spare one's valuable time. This application utilizes the ongoing versatile improvement advances and consequently expands the general exhibition of the workers, additionally has a considerable business esteem since it diminishes equipment and support cost and builds customer's

satisfaction. Work flow is a core process for any business looking to improve their bottom line. Remember, the most precious resource in your organization is human capital. It's up to your Work flow and company culture to harness that talent. Follow the tips and processes we listed here and you'll have no trouble turning a good employee into your best employee!

## REFERENCES

- [1] UKEssays. (November 2018). A Review Of Employee Management Systems Information Technology Essay. Retrieved from <https://www.ukessays.com/essays/information-technology/a-review-of-employee-management-systems-information-technology-essay.php?vref=1>.
- [2] Ingui, S. (2012) as cited on 23 August 2012, Performance reviews and Employee management of employees – criteria for effectiveness, CBP Lawyers: <http://www.cbp.com.au/Publications/Performance-reviews-andperformance-management-of>.
- [3] AITSL (2012) Australian Teacher Performance and Development Framework, August 2012 Australian Institute for Teaching and School Leadership Australia Ltd.
- [4] Tayler, C., Page, J., Deans, J., Gilley, T., Flottman R., & Young, S. (2009) A comprehensive approach towards excellence in ECEC teaching and learning, University of Melbourne, Melbourne
- [5] Cole, P. (2012) Aligning professional learning, Employee management and effective teaching, Centre for Strategic Education, Melbourne.
- [6] Baker, T. Dr. (2010) as cited on 15 November 2010, Don't discuss performance once a year, discuss it all year, HR Daily:

[http://www.hrdaily.com.au/nl06\\_news\\_selected.php?selkey=1649](http://www.hrdaily.com.au/nl06_news_selected.php?selkey=1649).

- [7] Sytch, M. and DeRue D.S. (2010) as cited on 22 June 2010, Ditch performance reviews? How about learn to do them well? Harvard Business Review Blog Network: <http://blogs.hbr.org/2010/06/ditch-performance-reviews-how/>.